

Rail holidays of Italy

Expressions



Rail holiday to Lake Garda



Rail holiday to Lake Garda

9 NIGHTS / 10 DAYS

Paris

Verona

Lake Garda

Milan

Lausanne and Munich - optional



Experience the comfort of rail travel as you journey through Europe by train to Lake Garda in Italy. Lake Garda is the largest of Italy's lakes and offers a variety of attractions all year round, making it the perfect destination for a rail holiday. We recommend that you travel by Eurostar to Paris before continuing to Verona on an overnight sleeper train. A private car will take you from Verona station to your hotel, spending 7 nights at either the 5 star Villa del Sogno at Gardone Riviera or at the 4 star Bellevue San Lorenzo in Malcesine, then return home by the same route. A range of other overnight and daytime travel options are also available, including rail journeys travelling through the spectacular scenery of the Swiss Alps. One option is to travel from London to Lausanne, stay overnight then continue the next day over the Simplon Pass into Verona or Desenzano del Garda. From here, transfer to the hotel by car. A daytime recommendation for your rail journey home would be to take the breath-taking Brenner Pass route through the Austrian Alps from Verona to Munich, with an overnight stay in the Bavarian capital. Train travel back to the UK from Munich is easy, with simple platform changes at Frankfurt and Brussels.

PRICES

From £1,890 per person

Price based on two sharing a double or twin room.

1st class rail travel can be added for a supplement. You can also upgrade to a 5 star hotel for a supplement.

DATES

This rail holiday can be arranged throughout the year. Timings can vary depending on the month and day of the week. For more information regarding rail services to and within Italy, view our train guide.

WHAT'S INCLUDED

- Rail travel on all trains including the Eurostar (first class can be booked at a supplement)
- Double sleeper compartment on Thello sleeper train
- 7 nights' accommodation on Lake Garda (including bed and breakfast at the Villa del Sogno or half board at the Bellevue San Lorenzo)
- Private return transfers from Verona station to your hotel

WHAT'S NOT INCLUDED

- Optional extra nights
- Transfers in Paris
- Meals other than breakfast at the hotels
- Early check in or late check out at hotels - though we can arrange this on request
- Supplements for alternative route options
- Any services not mentioned

OUTBOUND OPTION 1 – SLEEPER DIRECT

DAY ONE: Take the sleeper train from Paris

Start your rail holiday on an early afternoon Eurostar train to Paris, where you arrive at about 6pm before changing stations and continuing on the Thello sleeper train to Verona.

DAY TWO: Verona to Lake Garda

Arrive into Verona station at about 8am. A private car will be waiting for you here and will take you to your hotel on Lake Garda.

OUTBOUND OPTION 2 – OUT VIA LAUSANNE

DAY ONE: Rail to Lausanne

You board the Eurostar around 10am to Paris where there may be time for lunch at the famous Train Bleu restaurant, before you catch the high speed TGV train to Lausanne. You arrive here a little after 7.30pm and stay one night, or more, in the Hotel Angletterre et Residence which looks out over the shore of Lake Geneva.

DAY TWO: Lausanne to Verona

You have the morning at leisure in Lausanne before leaving around 2pm. The railway follows the Rhone up into the Alps before passing through the stunning Simplon Pass and along the shores of Lake Maggiore. After a simple platform change in Milan you arrive into Verona in the evening. A private car will meet you here to take you to your hotel on Lake Garda.

DAYS THREE TO EIGHT: Lake Garda

Spend six days at leisure on Lake Garda. On the lower slopes of the hills around Lake Garda are a profusion of lemons and olives, chestnuts and palms, magnolias and camellias. Pretty villages hug the sheltered bays and fishing boats still moor next to sailing boats. Monte Baldo, above the lake, can be reached by cable car and affords spectacular views. At Gargnano on Lake Garda you can see the stone pavilions where lemons were traditionally cultivated.

RETURN OPTION 1 – SLEEPER DIRECT

DAY NINE: Take the sleeper from Verona

After checking out of your hotel, a car will take you back to Verona station where you catch an overnight sleeper train to Paris, departing at about 9.30pm.



View of Lake Garda from Hotel Bellevue San Lorenzo

DAY TEN: Rail from Paris to London

Arrive in Paris at about 10am. Change stations in Paris and end your rail holiday by taking the midday Eurostar back to London.

RETURN OPTION 2 – VIA MUNICH

DAY NINE: Rail to Munich

After breakfast, a private car takes you back to Verona train station. Here you change onto the Eurocity train which takes you northwards, through the Brenner Pass into Austria, onwards across the Alps and arriving into Munich around 4.30pm. Enjoy an overnight stay in the centrally based Eden Hotel Wolff.

DAY TEN: Return via Frankfurt

A little before 10am you begin your rail journey home. You make your way north changing trains at Frankfurt, where you may have time for lunch. Continuing northwards, your train crosses over the Rhine and enters Belgium where you change onto the Eurostar from Brussels to London St Pancras, arriving back in the UK around 8pm.

OPTIONAL

It is possible to add extra nights in any of these destinations.

HOTELS

Details of the hotels in Switzerland, Italy and Germany can be found below.

Expressions

LAUSANNE (OPTION)

Hotel Angleterre et Residence 4 star

On the shores of Lake Geneva with stunning view of the Alps, this hotel comprises of five different buildings surrounding the main Reception. The hotel offers contemporary style in a historic setting with parts of the buildings dating back to the 18th century. The 75 bedrooms and Junior Suites are scattered between four buildings, each with their own distinct styles, but all guests will benefit from the same high standards of care from the friendly, professional staff.

LAKE GARDA

Belvue San Lorenzo 4 star

The villa dates from the late 19th century and is located in the picturesque little town of Malcesine on the eastern shores of Lake Garda. Set against a landscape of green rolling hills and rising mountains, the building has maintained original features such as its cloistered window, grand hearth and a fresco of the saint to whom the hotel owes its name. The rooms we offer have lake views and are spread across several buildings in the hotel grounds, and many can be upgraded to include a terrace or balcony too. The hotel's restaurant has a vegetarian menu available. Malcesine is about half a mile away and can be reached via steps from the hotel's gardens.

Hotel Villa del Sogno 5 star

This is a captivating hotel perched above the lake, offering comfortable and luxurious accommodation in attractive surroundings. The hotel is surrounded by a beautiful park, whilst guests can admire the views across the deep blue waters from the large terrace. The rooms are divided between the original villa and the newer extension beneath the villa, where the style is much more modern and many rooms are equipped with balconies. The hotel's restaurant, the Maximilian, offers guests the choice to eat in the plush dining room or outside on the terrace whilst the garden bar offers lunch and light snacks by the pool.

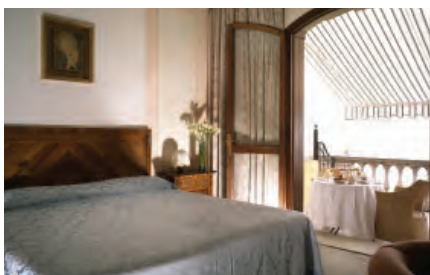


Villa del Sogno, terrace

MUNICH (OPTION)

Eden Hotel Wolff 4 star

The Eden Hotel Wolff has been one of the leading names in Munich since its foundation in 1890. The Art Nouveau building is ideally located opposite Munich Central rail station, making it the perfect stopover point from which to explore the city. The hotel has 210 rooms and suites on offer to guests in a variety of designs from classical through to elegant modern or Alpine stylings, whilst the hotel's restaurant the Peter & Wolff prides itself on the use of seasonal products from the regions suppliers in its menus.



Villa del Sogno, superior room with terrace



Belvue San Lorenzo, exterior



Belvue San Lorenzo, pool and gardens

MAP OF TOUR LAKE GARDA BY TRAIN

The map below illustrates the route outlined in this touring itinerary, with overnight stops and places of interest highlighted.



GENERAL INFORMATION

This tailor-made touring holiday is one of several suggested touring holidays we can offer you exactly as it is but also with any alterations you might want including extra nights in one or more places or adding in extra places. All our tours can be extended so that you can include a longer stay in one mountain or lake resort too, perhaps at the end of the itinerary. Do call to discuss the options with our travel consultants.

OUR TOURS

Our rail tours are for individuals travelling on their own or in their own family group. You do not join a group and you are not escorted.

FLEXIBLE ARRANGEMENTS

Our arrangements are very flexible in that you choose to travel on any day you want, subject to availability of trains and hotels. As mentioned above, additional nights can be added at any point.

EUROSTAR

A rail holiday to Italy starts with a journey by Eurostar from London St Pancras, Ebbsfleet or Ashford stations in the UK to either Paris Gare du Nord or Lille Europe. In summer months there are direct trains on Saturdays from London St Pancras to Avignon with no change required.

Eurostar offers almost hourly departures every day, allowing you to travel from the centre of London to the centre of Paris on the same train in three hours. Not all trains stop at the Ebbsfleet and Ashford stations in Kent, but parking is plentiful at both stations and it allows you to avoid London.

Check-in is 30 minutes prior to departure, customs formalities are completed before boarding and there is no limit to the amount of baggage that can be taken on board. The Eurostar trains themselves have 8 coaches which are split into Standard Class, Standard Premier and Business Premier as well as 2 cafeterias. Standard Premier customers are served a light cold meal and enjoy a more spacious environment than Standard Class, while Business Premier customers receive a hot meal and unlimited beverages as well as lounge access.

TRAIN TIMES

We have planned our itineraries based on train times that work day by day at the time of planning which can be up to a year before you travel. Usually train times stay more or less the same every day, season by season. The times we have planned will be discussed with you at the time you enquire about the holiday and they are detailed to you in your written holiday quotation. It may be that the timetable changes between the planning of the itinerary and when you come to book but we can always adjust the itinerary to suit the actual train times and any requirements you have for particular times of travel.

FIRST OR SECOND CLASS

We will automatically include travel in second class but lots of our clients do upgrade to first class service. On Eurostar this is called Premier Standard for leisure travellers as it gives you an upgraded on-board service and more spacious seating but without paying for the fully-flexible business tickets. On the Inter-city trains, upgrading to first class gives you more spacious seating with increased legroom. The price of upgrading varies from route to route but is something that is not always proportionately a lot more on the price of the overall holiday, so well-worth considering.

TRANSFERS

Transfers in Paris between stations and from the station to each hotel are not automatically included in the price of the holiday. In Paris most clients choose to take a taxi between the stations rather than go on the Metro but we can arrange a private car with driver to take you in between. This is quite useful if you are a family group that can't fit into one Paris taxi.

PRICE INFORMATION

This tailor-made touring holiday is one of several suggested touring holidays we can offer you exactly as it is but also with any alterations you might want including extra nights in one or more places or adding in extra places. All our tours can be extended so that you can include a longer stay in one mountain or lake resort too, perhaps at the end of the itinerary. Do call to discuss the options with our travel consultants.

OUR PRICES

The sample prices mentioned in this leaflet are generally a 'from' price based on the cheapest season of travel. However, train fares and hotel rates can change (up and down depending on offers), so we give you an accurate price for your holiday when we provide you with a quotation. Our sample prices should be used as an indication of how much a particular combination will cost and to show the differences on average between the hotel categories on offer.

PRICE INFORMATION IN MORE DETAIL

Hotel Villa del Sogno

From £2,310 per person for first class rail travel

From £2,190 per person for second class rail travel

Bellevue San Lorenzo

From £2,010 per person for first class rail travel

From £1,890 per person for second class rail travel

Prices based on two sharing a double or twin room using the Thello sleeper train.

What's included?

7 nights' bed and breakfast in a Lake View Room at Hotel Villa del Sogno, or 7 nights' half board in Lake View Room at Bellevue San Lorenzo.

First or second class travel on the Eurostar (as above)

Double sleeper compartment on Thello sleeper train

Private return transfers from Verona station to your hotel

What's not included?

Meals other than breakfast at the hotels

Transfers in Paris.

Early check in or late check outs at hotels, although we can arrange this on request.

Supplements for alternative routes

Any services not mentioned above

Expressions

BOOKING CONDITIONS

Our booking conditions apply to all holidays. A copy can be found on our website and a copy is also sent to you with a written quotation and when you make a booking.

FINANCIAL PROTECTION

Expressions Holidays offers full financial protection for all holidays you book with us. If your holiday includes a flight, the ATOL (3076) covers the costs of the holiday. If the holiday does not include a flight, it is the ABTOT bond that protects the cost of the holiday. We are also members of AITO (the Association of Independent Tour Operators) and ABTA.



Expressions Holidays

Lynx House, Pynes Hill, Exeter EX2 5JL

HOW TO BOOK

To make a booking, just phone us on

01392 441275

and we can take you through the details we need and start the booking process. A deposit is required to confirm the arrangements and this can be paid by debit or credit card over the phone. The level of the deposit will be confirmed at the point of booking and will depend on the ticketing deadlines of the rail tickets involved in your booking.