

Rail holidays of Italy

Expressions



Rail holiday over the Swiss Alps to Venice



Rail holiday over the Swiss Alps to Venice by train

5 NIGHTS / 6 DAYS

Lucerne

Gotthard Pass

Venice

Burano

Murano



This is a magnificent train journey with a jewel of an end destination. Your rail journey starts out from the UK by Eurostar to Paris where you change to a high speed TGV train to Lucerne. Following a night or more in Lucerne, you travel onwards along the Alpine railways through the developing scenery of mountains, lakes and vineyards all the way to Venice. You can then return home on the overnight sleeper train to Paris and then onwards to London. Alternatively you could choose to travel by daytime trains back to the UK, breaking the journey in Milan before journeying home via Lausanne.

PRICES

From £1,710 per person

Price based on two sharing a double or twin room and 4 star hotels.

1st class rail travel can be added for a supplement. Hotel upgrade options are possible in Venice for a supplement.

DATES

This rail holiday can be arranged throughout the year. Timings can vary depending on the month and day of the week. For more information regarding rail services to and within Italy, view our train guide.

WHAT'S INCLUDED

Accommodation on bed and breakfast as below

- 1 night in a Classic room at the Hotel Wilden Mann in Lucerne
- 3 nights in a Classic room at the Hotel Bisanzio in Venice
- Second class travel on all trains including Eurostar
- Double sleeper compartment on the Thello sleeper train
- Private water taxi transfers in Venice

WHAT'S NOT INCLUDED

- Optional extra nights
- Transfers in Lucerne and Paris
- Meals other than breakfast at the hotels
- Early check in or late check out at hotels - though we can arrange this on request
- Supplements for alternative route options
- Any services not mentioned

DAY ONE: Travel by rail to Lucerne

Begin your rail holiday by departing from London by Eurostar just before 8.00am to arrive into Paris around 11.30. Using a local taxi, you change to Gare de Lyon station to continue on the high-speed TGV train to Basel and then onwards to Lucerne where you arrive at around 7.00pm. Stay at the charming Hotel Wilden Mann in the Jewish Quarter of Lucerne.

DAY TWO: Lucerne to Venice

The so-called City of Light is a bubble of cosmopolitan atmosphere, as well as a place of rich, historic significance. Spend the morning wandering down the pretty streets, taking in the individuality of the boutique shops and quaint cafes. A highlight of your stay in Lucerne will be walking along the Chapel Bridge and seeing the Water Tower. Leave Lucerne around midday continuing by rail to Venice on the Intercity service with an easy change in Milan. The journey from Lucerne to Venice is relaxing and convenient, allowing you to take in the striking scenery en route. You leave Lucerne at around 12.00am and travel through the Alps using the Gotthard Basel Tunnel which links Fluelen to Bellinzona. From here it's a short distance to the Italian border at Chiasso. After changing trains in Milan you head east, stopping at the historic cities of Verona, Vicenza and Padua before reaching Venice Santa Lucia train station just before 7pm. A private boat will take you to your hotel, the Hotel Bisanzio, where you stay for three nights.

DAYS THREE AND FOUR: Venice

Enjoy a few days at leisure in the Venetian capital. More than a city, Venice "La Serenissima" is an enchantress. Take the time to discover her winding streets, lavish ballrooms and lively wine bars, and perhaps catch one of local water taxis to explore the islands of the lagoon. Burano, island of lace-making and fishermen, is impressively picturesque whilst on Murano master craftsmen offer demonstrations of glass-making before you enter their shops. A visit to both these islands is thoroughly recommended to provide an alternative view of Venice.

RETURN OPTION 1 – DIRECT SLEEPER

DAY FIVE: Take the sleeper to Paris

You have most of this day to continue your exploration of Venice before being taken by private water taxi back to Santa Lucia station. Here, you catch the overnight sleeper train to



Lake Lucerne

Paris, leaving at around 8.00pm. The sleeper train offers a simple but time effective means of covering a large distance. We include a private twin cabin for your comfort.

DAY SIX: Return to London

The sleeper arrives in Paris a little before 10am. Use a taxi again to change from Paris Lyon to Paris Nord station, and end your rail holiday as the Eurostar takes you on the last leg of the journey back to the UK where you arrive in the early afternoon.

RETURN OPTION 2 – VIA MILAN AND LAUSANNE

DAY FIVE: Venice to Milan

At around 10am a private water taxi will take you to Santa Lucia station where you board a train to Milan, arriving just before 1.30pm. A private car will take you to your hotel and back again at the end of your stay. Have the afternoon and evening to explore Milan from your centrally based hotel, the Baglioni Hotel Carlton. Milan is Italy's second largest city in Italy, however the historic centre is easily manageable either on foot or by the comprehensive metro system and the atmosphere is sophisticated and not nearly as Mediterranean as other Italian cities. Milan is renowned for its fashion and shopping - this is certainly one past time that people visit for. The magnificent Duomo is the world's largest Gothic cathedral and was started in 1386, taking almost five centuries to complete. A visit to the Convent of Santa Maria delle Grazie, which houses Leonardo Da Vinci's Last

Supper is a must, but be sure to book tickets in advance.

DAY SIX: Milan to London via Lausanne

Leave Milan just before 8.30am to travel by train back to Paris through Switzerland. Your journey takes you past Lake Maggiore and through the stunning Simplon Pass. The train then descends, following the Rhone to Lausanne on the shores of Lake Geneva. You change trains easily here and arrive into Paris just after 4pm. You finish your rail holiday by boarding the Eurostar which gets you back into London around 8.30pm.

OPTIONAL

It is possible to add extra nights in any of these destinations if you would like to spend more time there.

HOTELS

Details of the hotels in Switzerland and Italy can be found below.

Expressions

LUCERNE

Hotel Wilden Mann 4 star

The Wilden Mann has been in the hospitality trade for 500 years, bringing excellent quality of service and charm each of its guests. With just 48 rooms spread across 6 different houses, the atmosphere is one of a home-from-home and this hotel offers the perfect balance of historic and old-world elegance with modern facilities. It is located just a stone's throw from the iconic Chapel Bridge and Nadelwehr and is only a 10 minute walk from the train station, making it the perfect stopover in the enchanting old streets of Lucerne.

VENICE

Hotel Bisanzio 4 star

Less than 300 metres from St Mark's Square, the Hotel Bisanzio occupies an ancient 16th-century palazzo in a prime location, right in the heart of the oldest and most romantic part of Venice. The hotel offers 40 rooms and luxury suites, all of which are decorated in traditional 18th-century Venetian style. Whilst the hotel has no restaurant it boasts a breakfast room and bar along with two quiet sitting rooms, a lovely place to relax after a busy day's sight seeing.

Ca'Sagredo Hotel 5 star

Ca'Sagredo Venice sits majestically on the banks of the Grand Canal in Venice. With only 42 rooms and suites, the grand public areas of Ca'Sagredo make up a large proportion of the hotel and include marble staircases and beautiful frescoed halls. The elegant guest rooms at Ca'Sagredo are each unique and combine traditional Venetian decoration with some contemporary touches. Enjoy Venetian cuisine and local wines while whilst overlooking the Grand Canal from the panoramic terrace at the L'Alcova Restaurant or a drink in L'Incontro, the atmospheric bar. The Ca'Sagredo hotel is just a short walk away from St Mark's Square, the main museums and the best fashion boutiques.



Hotel Bisanzio, Venice

Baglioni Hotel Luna 5 star

The popular 5 star Baglioni Hotel Luna enjoys a splendid location a few yards from the western edge of St Mark's Square and about one hundred yards to the lagoon at the mouth of the Grand Canal. The hotel has its own landing stage for private water taxis. On the site of what has been an hotel since the Middle Ages, the present building has recently been refurbished elegantly both inside and outside. As you enter the Baglioni Hotel Luna, the marble floors and wall panelling as well as the galleried, air-conditioned reception area create a feeling of calm, space and coolness. As you move upstairs the marbled flooring gives way to plush carpets that extend to all the bedrooms. Breakfast can be enjoyed as an American-style buffet in the grand, 18th Century breakfast room or continental-style in your room.

MILAN (OPTION)

Baglioni Hotel Carlton 5 star

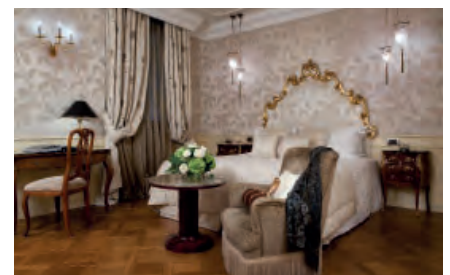
This luxury five star hotel can be found discreetly tucked away on the Via della Spiga, Milan's most fashionable shopping street, and the Via Montenapoleone, the cathedral and famous La Scala theatre are a short distance away. Inside, discover an intimate and sophisticated atmosphere with marble floors and dark wood wall panels. The hotel provides outstanding levels of service and facilities, including the historic Il Baretto al Baglioni Restaurant which serves national dishes with Mediterranean influences.



Wilden Mann, Lucerne



Ca'Sagredo Hotel, Venice



Baglioni Hotel Luna, Venice

MAP OF TOUR TRAVEL BY TRAIN OVER THE SWISS ALPS TO VENICE



The map below illustrates the route outlined in this touring itinerary, with overnight stops and places of interest highlighted.



GENERAL INFORMATION

This tailor-made touring holiday is one of several suggested touring holidays we can offer you exactly as it is but also with any alterations you might want including extra nights in one or more places or adding in extra places. All our tours can be extended so that you can include a longer stay in one mountain or lake resort too, perhaps at the end of the itinerary. Do call to discuss the options with our travel consultants.

OUR TOURS

Our rail tours are for individuals travelling on their own or in their own family group. You do not join a group and you are not escorted.

FLEXIBLE ARRANGEMENTS

Our arrangements are very flexible in that you choose to travel on any day you want, subject to availability of trains and hotels. As mentioned above, additional nights can be added at any point.

EUROSTAR

A rail holiday to Italy starts with a journey by Eurostar from London St Pancras, Ebbsfleet or Ashford stations in the UK to either Paris Gare du Nord or Lille Europe. In summer months there are direct trains on Saturdays from London St Pancras to Avignon with no change required.

Eurostar offers almost hourly departures every day, allowing you to travel from the centre of London to the centre of Paris on the same train in three hours. Not all trains stop at the Ebbsfleet and Ashford stations in Kent, but parking is plentiful at both stations and it allows you to avoid London.

Check-in is 30 minutes prior to departure, customs formalities are completed before boarding and there is no limit to the amount of baggage that can be taken on board. The Eurostar trains themselves have 8 coaches which are split into Standard Class, Standard Premier and Business Premier as well as 2 cafeterias. Standard Premier customers are served a light cold meal and enjoy a more spacious environment than Standard Class, while Business Premier customers receive a hot meal and unlimited beverages as well as lounge access.

TRAIN TIMES

We have planned our itineraries based on train times that work day by day at the time of planning which can be up to a year before you travel. Usually train times stay more or less the same every day, season by season. The times we have planned will be discussed with you at the time you enquire about the holiday and they are detailed to you in your written holiday quotation. It may be that the timetable changes between the planning of the itinerary and when you come to book but we can always adjust the itinerary to suit the actual train times and any requirements you have for particular times of travel.

FIRST OR SECOND CLASS

We will automatically include travel in second class but lots of our clients do upgrade to first class service. On Eurostar this is called Premier Standard for leisure travellers as it gives you an upgraded on-board service and more spacious seating but without paying for the fully-flexible business tickets. On the Inter-city trains, upgrading to first class gives you more spacious seating with increased legroom. The price of upgrading varies from route to route but is something that is not always proportionately a lot more on the price of the overall holiday, so well-worth considering.

TRANSFERS

Transfers in Paris between stations and from the station to each hotel are not automatically included in the price of the holiday. In Paris most clients choose to take a taxi between the stations rather than go on the Metro but we can arrange a private car with driver to take you in between. This is quite useful if you are a family group that can't fit into one Paris taxi.

PRICE INFORMATION

This tailor-made touring holiday is one of several suggested touring holidays we can offer you exactly as it is but also with any alterations you might want including extra nights in one or more places or adding in extra places. All our tours can be extended so that you can include a longer stay in one mountain or lake resort too, perhaps at the end of the itinerary. Do call to discuss the options with our travel consultants.

OUR PRICES

The sample prices mentioned in this leaflet are generally a 'from' price based on the cheapest season of travel. However, train fares and hotel rates can change (up and down depending on offers), so we give you an accurate price for your holiday when we provide you with a quotation. Our sample prices should be used as an indication of how much a particular combination will cost and to show the differences on average between the hotel categories on offer.

PRICE INFORMATION IN MORE DETAIL

From £1,940 per person for first class rail travel.

From £1,710 per person for second class rail travel.

Prices based on two sharing a double or twin room.

What's included in this touring itinerary?

Accommodation on bed and breakfast as below:

- 1 night in a Classic room at the Hotel Wilden Mann in Lucerne
- 3 nights in a Classic room at the Hotel Bisanzio in Venice
- Private water taxi transfers in Venice
- First or second class travel on all trains (as above) including Eurostar
- Private twin cabin Thello sleeper train

What's not included?

- Meals other than breakfast at the hotels
- Transfers in Lucerne and Paris.
- Early check in or late check outs at hotels – though we can arrange this on request.
- Supplements for alternative route options
- Any services not mentioned above

Prices for stays in different hotels will vary enormously. Please contact us to discuss your requirements.

Expressions

BOOKING CONDITIONS

Our booking conditions apply to all holidays. A copy can be found on our website and a copy is also sent to you with a written quotation and when you make a booking.

FINANCIAL PROTECTION

Expressions Holidays offers full financial protection for all holidays you book with us. If your holiday includes a flight, the ATOL (3076) covers the costs of the holiday. If the holiday does not include a flight, it is the ABTOT bond that protects the cost of the holiday. We are also members of AITO (the Association of Independent Tour Operators) and ABTA.



Expressions Holidays
Lynx House, Pynes Hill, Exeter EX2 5JL

HOW TO BOOK

To make a booking, just phone us on

01392 441275

and we can take you through the details we need and start the booking process. A deposit is required to confirm the arrangements and this can be paid by debit or credit card over the phone. The level of the deposit will be confirmed at the point of booking and will depend on the ticketing deadlines of the rail tickets involved in your booking.